



FOR PLAYSTATION 4, PLAYSTATION 4 SLIM AND PLAYSTATION PRO

# PS4 Upgrade Kit Manual

## LEGEND



PS4 NOT INCLUDED

USB FLASH DRIVE

HARD DISK DRIVE

SCREW DRIVER

ALUMINUM ENCLOSURE  
(FOR OLD HARD DRIVE)

## What's Included:

- 2.5" Hard Disk Drive
- Fantom Drives G-Force
- Aluminum External Enclosure
- Usb 3.0 Flash Drive
- Screw Driver
- Quick Installation Guide

## SET UP

---

### Step 1: Preparation

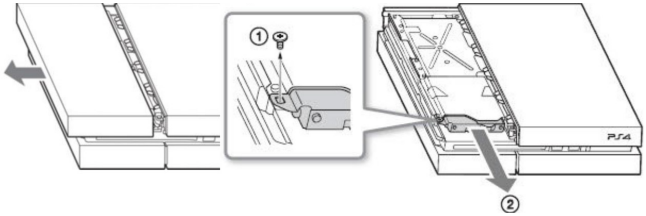
1. On a PC, visit <https://www.playstation.com/en-us/support/hardware/ps4/system-software/> to download System Software. Scroll to Download the reinstallation file for a PS4 console and download (approximately 900mb).  
**\*\*\* Be sure to download the larger file under "Perform a New Installation of the System Software"**
2. Connect the USB Flash Drive and create a folder within the USB Flash Drive name (in capital letters) "PS4." Inside the "PS4" folder, create another folder name (in capital letters) "UPDATE."
3. Place the downloaded "PS4UPDATE.PUP" file into the "UPDATE" folder.

### Step 2: Backing-Up Games

1. Connect USB Flash Drive after turning PS4 on.
2. Go to Settings > Applications Saved Data Management > Saved Data in System Storage > Copy to USB Storage Device and select the games you want to back up. (This will back up your saved games, not the entire game. You will have to download the entire game manually and upload the backup to retain your original location of your games.

### Step 3A: Hard Drive Upgrade for **PS4**

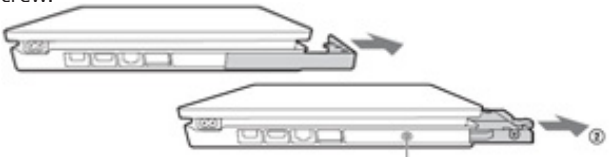
1. Power down your PS4 and disconnect all cables attached to the PS4.
2. Slide the drive bay cover off.
3. Use the included screwdriver to remove the screws that is holding the HDD carrier in place.
4. Pull the HDD carrier towards the front of the PS4 to remove it.



5. Remove the four screws that anchors the HDD and remove the HDD.
6. Slide the replacement HDD into the carrier (label side up). Make sure the SATA ports are oriented towards the open end of the carrier. Reattach the screws to the HDD.
7. Slide the carrier back into the drive bay and attach the screw removed in step 3.
8. Slide the drive bay cover back into place. (Complete installation instructions are available at the PlayStation website).

### Step 3B: Hard Drive Upgrade For **PS4 Slim**

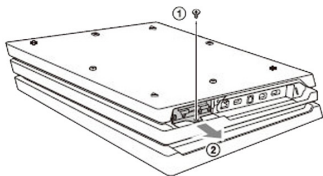
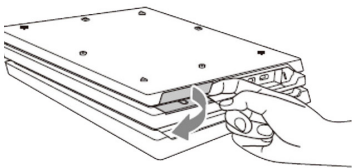
1. Power down your PS4 SLIM and disconnect all cables attach to the PS4 SLIM.
2. Turn the PS4 SLIM around to face rear panel.
3. Locate Hard Drive bay cover on the right and slide the drive bay cover off.
4. Once you reveal the HDD bay, use a screwdriver to remove the screw.



5. Pull on the ribbon and slide Hard Drive carrier out.
6. Remove the four screws that anchors the HDD and remove HDD.
7. Slide the replacement HDD into the carrier. Make sure label is facing inside the carrier and SATA port is facing oriented towards the open end of carrier. Reattach the screws to the HDD.
8. Reinsert the carrier back into the drive bay and attach the screw removed in step 4.
9. Slide the drive bay cover back into place.

### Step 3C: Hard Drive Upgrade For **PS4 Pro**

1. Power down your PS4 PRO and disconnect all cables attach to the PS4 PRO.
2. Turn the PS4 PRO around to face the rear panel and place the PS4 PRO upside down.



3. Locate the Hard Drive plastic cover on the left. Apply pressure to remove (see image). There may be a sticker covering the HDD bay cover. It's safe to remove this and it will not affect the warranty.
4. Once you reveal the HDD bay, use a screwdriver to remove the screw.
5. Pull and Slide the Hard Drive carrier out.
6. Remove the four screws that anchors the HDD and remove HDD.

7. Slide the replacement HDD into the carrier. Make sure label is facing inside the carrier and SATA port is facing oriented towards the open end of carrier. Reattach the screws to the HDD.
8. Reinsert the carrier back into the drive bay and attach the screw removed in step 4.
9. Reattach the drive bay cover back into place.

## **Step 4: System Software Install**

After the HDD has been replaced, the system software must be reinstalled.

1. Reconnect your PS4 back to the respected cables.
2. Connect USB Flash Drive to your PS4 System.
3. Hold down power button (1st beep) for 8 seconds and upon 2nd beep, release the button.
4. Screen should display SAFE MODE and prompt you to
5. connect DUALSHOCK 4 controller via USB cable and press PS4 button. If it doesn't detect the controller; remove and retry the connection.
6. Select option "Initialize PS4 (Reinstall System Software) and press OK.
7. Your screen should flag "The PS4 will be initialized. All users and all data will deleted, Are you sure you want to continue?" Select "YES" and the PS4 will begin initializing the installation.
8. When the installation is finished, your PS4 will restart. It will prompt you to connect the controller to the PS4 via USB cable and click PS4 button.
9. Follow the instructions on the screen to setup your new Playstation 4 set up.

## Step 5: Restoring Saved Games

1. Connect the USB Flash Drive with your backed up data to PS4.
2. Visit Setting > Application Saved Data Management > Saved Data on USB Storage Device and select “Copy to System Storage.”
3. Select a game/media title, press X to add a check mark to the box. Select “Copy” and confirm overwrite with “Yes.”

## Step 6: Reusing the Old HDD

1. Remove the plastic cover end of the enclosure, if it is not already removed. If it has previously been screwed into place, remove the screws first.
2. Carefully slide out the hard drive tray.
3. Connect the 2.5" hard drive to the SATA / power connector in the tray.
4. Place the plastic end cover back into the enclosure and secure it with the screws provide.
5. You can use the external hard drive for Windows PC or Mac OS. For Windows, format it to NTFS. For Mac, format it to HFS.

**You can find more information on how to upgrade your PS4 on PlayStation's Official Website:** <https://www.playstation.com/en-gb/get-help/help-library/system---hardware/storage---data/upgrade-playstation-4-hdd/>

Please retain a copy of your receipt. You will need it if warranty repair service is required in the future.

Fantom Drives  
20525 Manhattan Place  
Torrance, Ca 90501  
Sales: 310-320-7272  
Email: Sales@Fantomdrives.com

[Www.fantomdrives.com](http://www.fantomdrives.com)

---

02/11/2017

The material in this document is for information only and is subject to change without notice. While reasonable efforts have been made in the preparation of this document to assure its accuracy, Fantom Drives assumes no liability resulting from errors or omissions in this document, or from the use of the information contained herein. Fantom Drives reserves the right to make changes in the product design without reservation and without notification to its users.

Fantom Drives and the Fantom Drives Logo are registered trademarks of BNL Technologies, Inc. PlayStation is a registered trademark of Sony Corporation. This product is made by Fantom Drives and is not endorsed, manufactured, or distributed by Sony. All other names, logos, and images are property of their respective owners.

Copyright © 1999, 2017 Fantom Drives. All rights reserved. This publication may not be reproduced, stored in a retrieval system, or transmitted in any form or by any means, in whole or in part, without the prior written consent of Fantom Drives, 20525 Manhattan Place, Torrance CA 90501.